

# WOODFIN NEWSLETTER



## NOTES FROM OUR SUPERINTENDENT

May is here and the golf season is upon us. The grass is turning green, and I am

excited to see what this year has in store for the course. I have been asked multiple times this spring “Are we greening up quicker this year than in years past?” The short answer is yes, but there have been a few contributing factors. The ridiculous amount of rainfall in January and March has definitely contributed to this, but also the changes we

have made to the herbicide program have been the biggest factor. We used to spray a non-selective herbicide for annual bluegrass on the dormant turf in the winter. This would delay greening up in the spring. The last couple of years we have sprayed a pre-emergent mixture in the fall and have gotten much better control of the annual bluegrass without stunting or delaying turf green up.

We have a few new employees, and it will take us a little time to get them up to speed on how and where to mow with different equipment. You probably have noticed white lines painted around the greens and tee boxes. This is a line to show the guys an outside boundary, so they do not mow where they are not supposed to mow. Another reminder, Fishing is prohibited in all golf course ponds and lakes. It is very dangerous for multiple reasons for you or your kids to be on the course whether the course is open or not.

Balls, carts, and deep water are all obvious hazards on a golf course, and I wish I could say that bad things never happen, but that would not be true. SCDNR has been notified of our situation and has offered their support in helping us with our problem with trespassing if needed.

Thank you, Lance Allen GCS

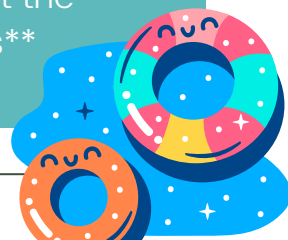
## PLEASE READ:

If you have questions regarding billing or charges please contact Hollie at [Hollie@woodfinridge.com](mailto:Hollie@woodfinridge.com) or on her cell phone 315-720-4255 as she will not be on site the month of May.

We do have all new pool access this season. If you use the pool you will need a key fob in order to enter.

Pool will open Friday May 24th.

\*\*PLEASE do not throw your dog poop into trash cans at the tennis courts\*\*





### UPCOMING EVENTS

Mark your calendar

**BRUNCH EVERY SUNDAY- 11am-2pm- New & Improved Menu**

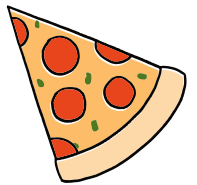
**Upcoming Events- Now serving limited Menu on Monday's 11-5pm**

**RANGE CLOSSES AT 8:00PM**

- May 7th- Taco Night
- BREAKFAST AVAILABLE MONDAY- SATURDAY 7:30am-11
- Dog Fight Every Thursday!
- May 15th - Ladies Luncheon - Everyone welcome - 12pm
- May 16th- Pizza Night
- Mother's Day Brunch- May 12th **\*\*Reservations Required.\*\***

\*Looking to book a party? Please contact Jaime!

Jaime@woodfinridge.com - Our Calendar books quickly.



**Pool Information: Pool Opens May 24th. Pool Hours will be 8am-9:00pm - Woodfin Wahoos will practice 8am-10am Monday-Thursdays for the month of June.**

**Woodfin will host 2 meets June 4th & June 11th @5:30pm**

### FROM THE GOLF SHOP:

PLEASE REMEMBER: NO WALKING, NO RIDING BIKES, SCOOTERS, PERSONAL GOLF CARTS, STROLLERS, ROLLERBLADING ETC. on the cart paths or course at any time. NO FISHING or TRESSPASSING on the property. If caught fishing, you will be fined. PLEASE NOTE ALL NEW "NO TRESSPASSING" Signs.

**RANGE BALLS & BAGS ARE WOODFIN RIDGE PROPERTY. PLEASE DO NOT REMOVE THEM FROM THE DRIVING RANGE. Range closes at 8:00pm.**

Mark your Calendar!

- Closed for outside tournament Wednesday May 1st & May 3rd
- Outside Tournament- The Garden Tournament May 18th
- Interclub May 21st
- Member / Member- May 31st- June 2nd **\*\* Please see additional details at the pro shop\*\***
- Flag Tourney- June 29th
- Night Golf July- 19th
- Red, White & Blue Tournament- July 6th
- Club Championship August 17th & 18th
- Two Day Dog Fight (Stableford) September
- Member Guest October 11-13th

Contact: drayton@woodfinridge.com for sign up details, as well as any questions about future operation 36 programs.

